

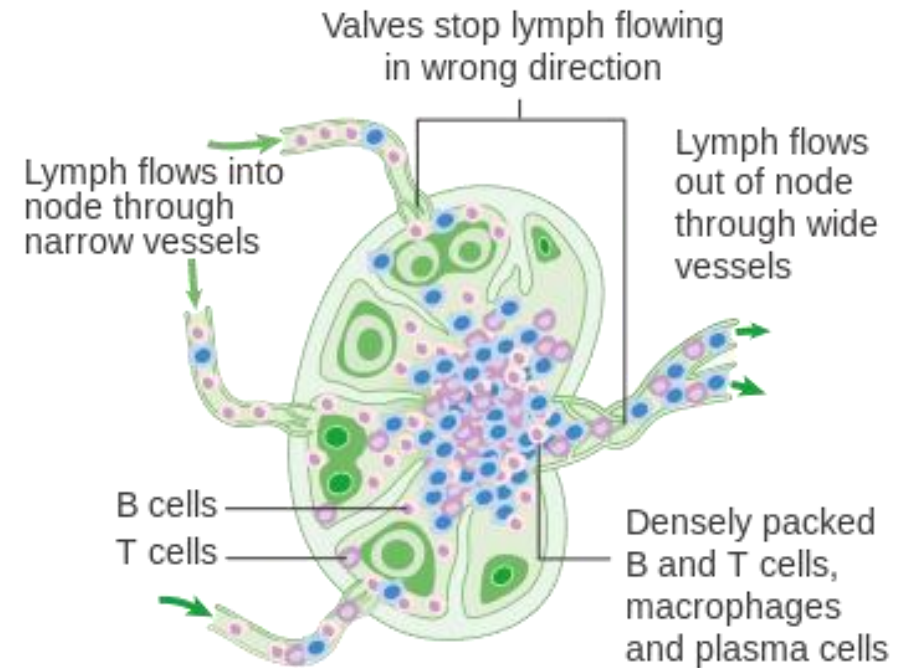
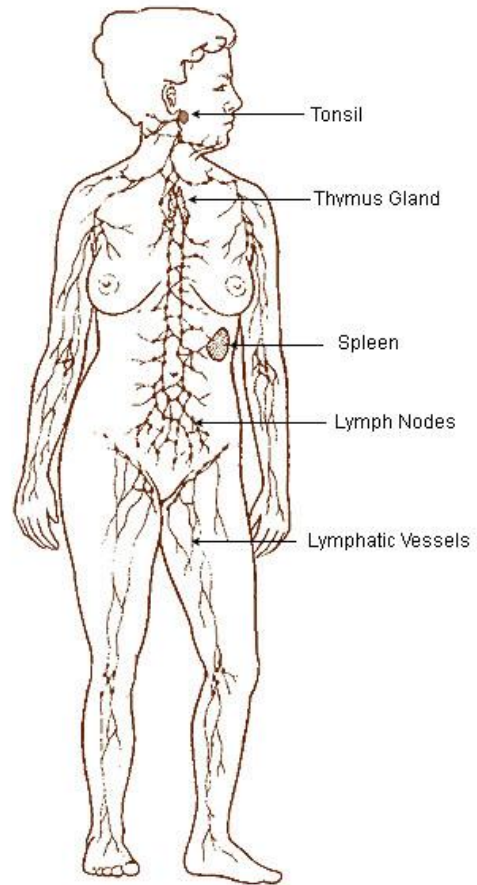
# HOW TO EXAMINE YOUR LYMPH NODES

Mr Oliver Cassell

Consultant Plastic and Reconstructive Surgeon

Oxford University Hospitals

# LYMPH SYSTEM



Courtesy CRUK

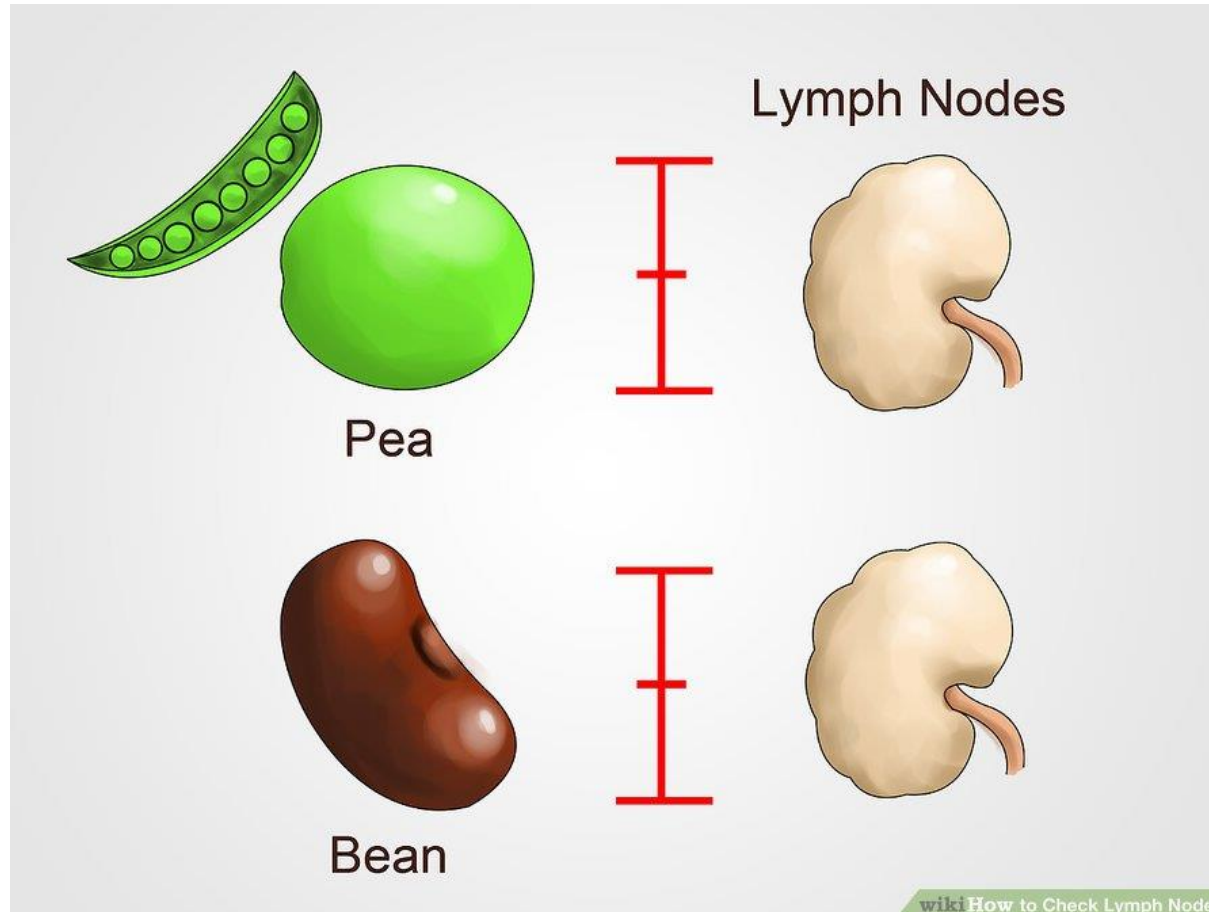
# WHAT DO LYMPH NODES DO



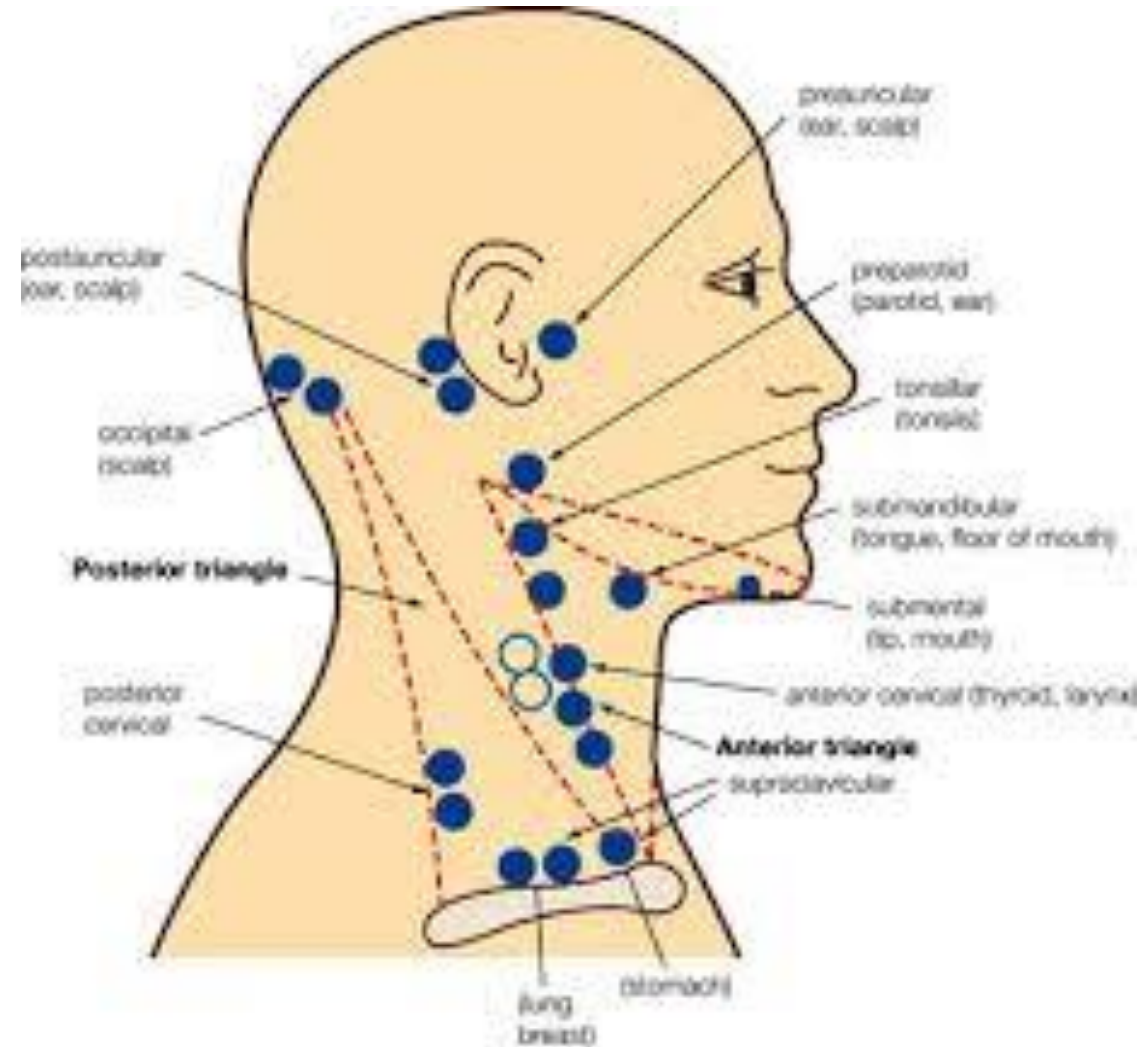
USE 3 FINGERS IN A CIRCULAR OR SIDE TO  
SIDE MOTION



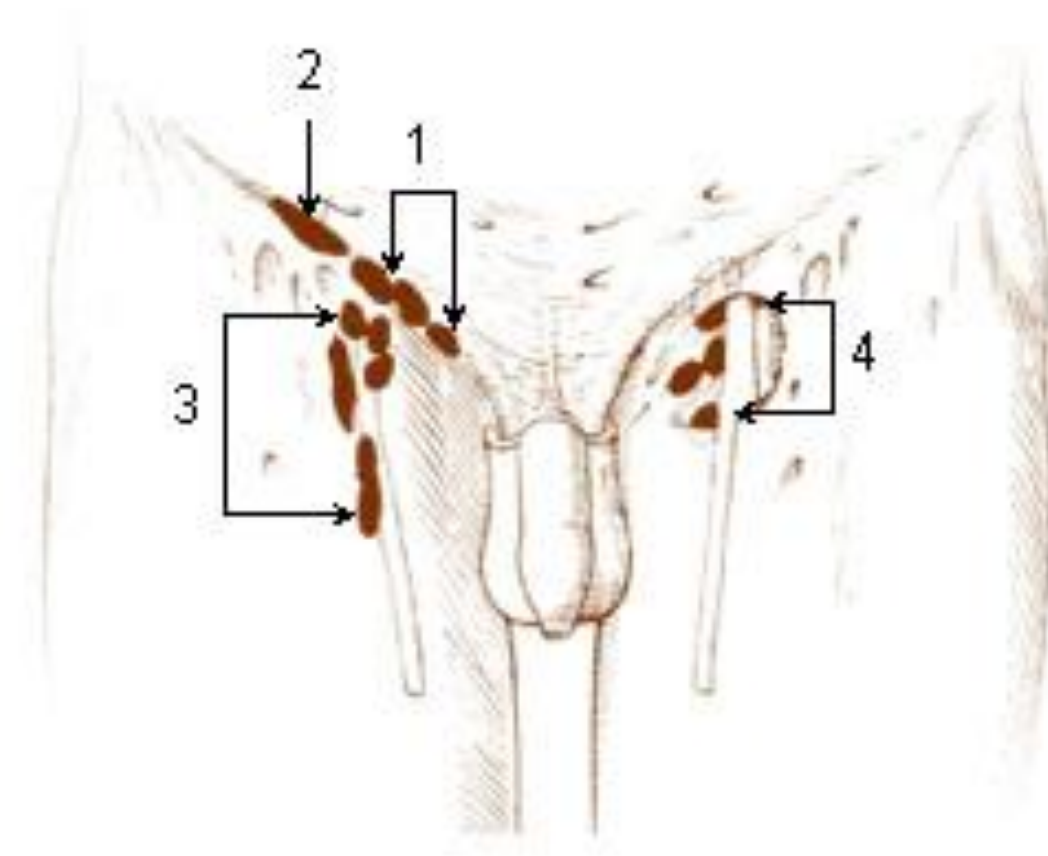
# DESCRIPTION



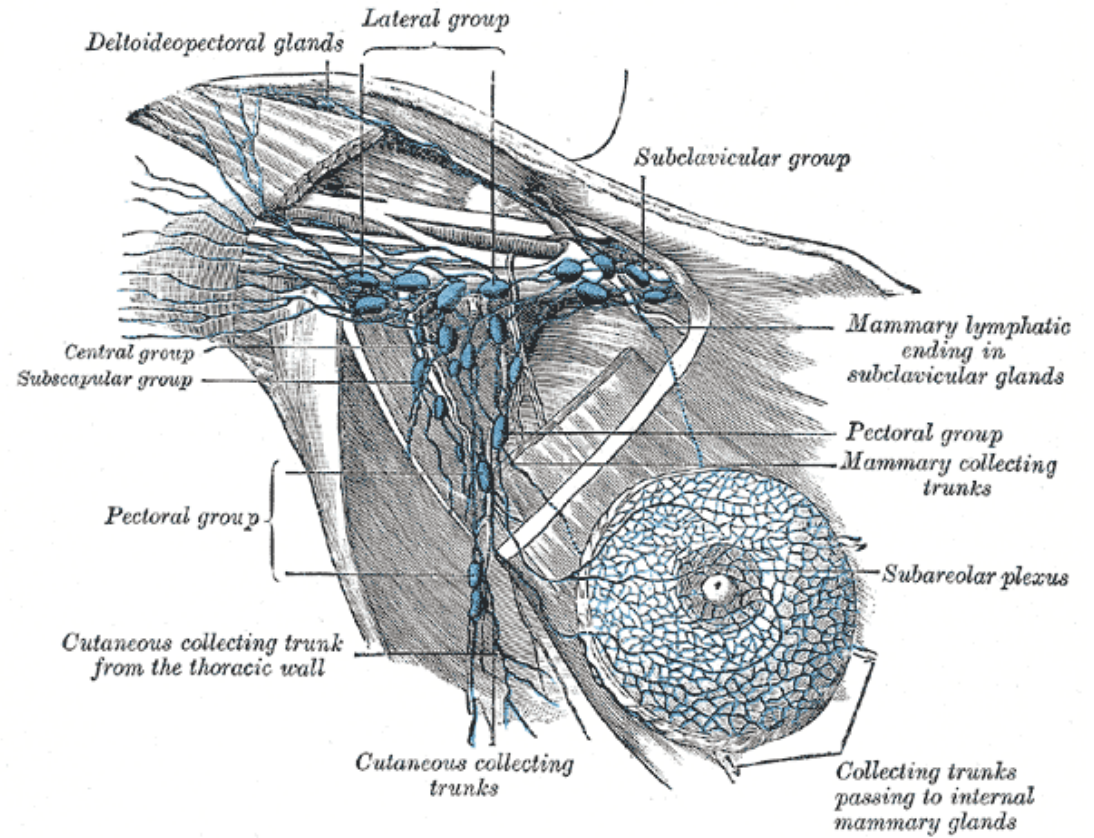
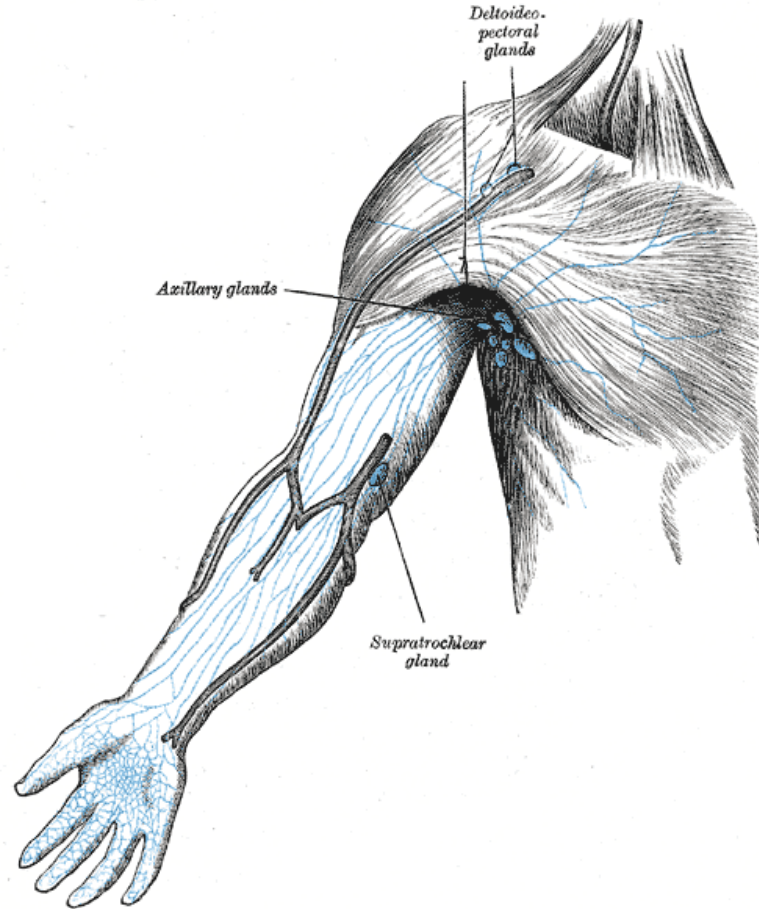
# NECK NODES



# GROIN NODES



# AXILLA NODES





# WHEN TO CHECK

- With your doctor/ nurse at consultation to learn
- After your visit
- Every 2 weeks

# WHAT TO DO IF CONCERNED

- Give 1-2 weeks to see if reduces
- Contact CNS/specialist